



Get Audience Feedback in a Second



XPRESS is an advanced Response System that enhances interactivity in conferences, lectures and presentations. It allows you to receive instant feedback from users at anytime!

Applications:

- ◆ Instant Voting and Feedback Retrieval
- ◆ Quiz and Test (with auto-marking & answer collection)
- ◆ Corporate Training
- ◆ Conference
- ◆ Game and Contest

SUN **TECH**
SUN -TECH I.T. Solutions Limited

Professional Design

- ◆ Stylish design of audience keypad with LCD display
- ◆ Portable hardware with light weight receiver for easy transportation
- ◆ Easy and simple installation, just plug and play XPress with any USB connection
- ◆ Reliable Radio Frequency technology which gives stable connectivity and better reception



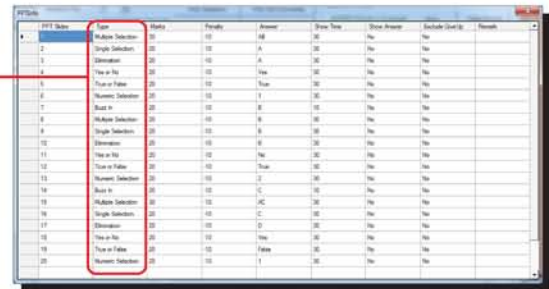
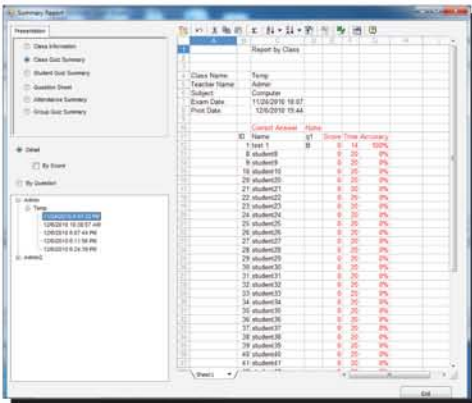
Better Support & Performance

- ◆ Support up to 3000 users at the same time
- ◆ With receiving angle of 360 degrees
- ◆ With signal receiving distance of 100 meters
- ◆ Power management on keypads by entering sleep mode when keypads are not in use



Powerful XPRESS Software

- ◆ Easy and simple to use “Paper Converter” for educators, trainers and presenters to prepare presentation or quiz content
- ◆ Import questions in Excel format and convert to PowerPoint slides in few seconds
- ◆ Support questions in multiple formats for presentation or quiz event

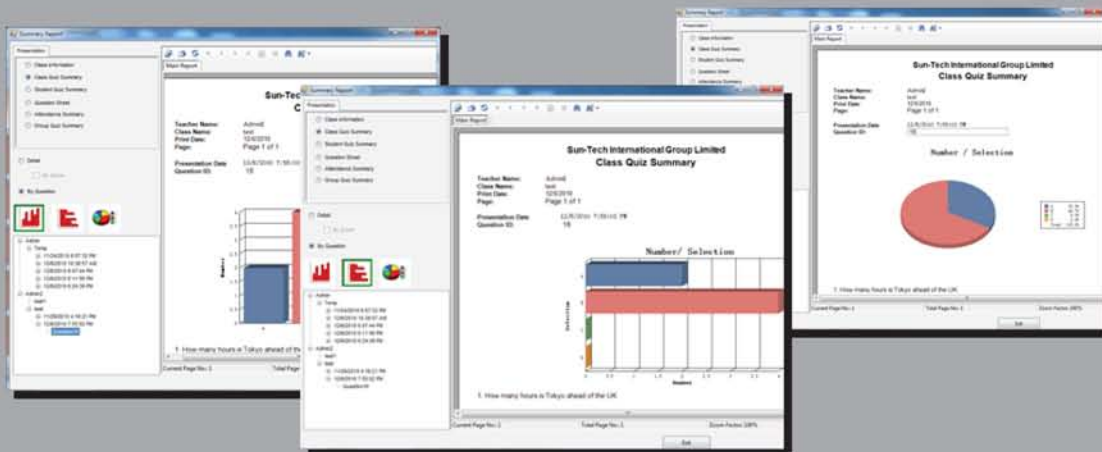


- Single Selection
- Numeric Selection
- Multiple Selection
- Buzz-in
- Yes/No
- True or False
- Rating Scale

- ◆ Support paperless quiz without the use of PowerPoint or Word
- ◆ Collect answer with receiver and results can be marked automatically

Grouping & Reporting

- ◆ Audience can be divided into different groups which report could be generated according to groups
- ◆ Display real-time result in diversified modes



- ◆ With the Summary Report Function, various reports can be generated according to different criteria such as individual, class or question
- ◆ Reports can be exported to different formats such as Excel, PDF, Word, etc. for further analysis

Hardware Specifications

Audience Remote Response Time:

Response time is proportional to the number of participants

Number of Participants	Time required to complete signal retrieval (in second)
100	1.2s

**Depends on environmental condition*

RF Receiver	Dimensions	127mm x 65mm x 27mm
	Power requirement current	Provided by computer USB port (External power is not required)
	Technology	Two-way RF eligible license-free / license-example frequencies / ISM Band
	Receiving angle	RF receiving angle 360°
	Receiving distance	Maximum 100 meters in an open area
	USB cable	USB port to RJ45 port
	Number of participant	Up to 3000 users
Instructor Keypad	Dimensions	104mm x 49mm x 15mm
	Control button	13
	Power requirement	Battery size "AAA" 1.5volt x 2 Battery lasts for 1 year
	RF signal	Maximum 100 meters in an open area
	Sleeping mode	Enter sleeping mode after 10 minutes without pressing any key
	RF frequency	2.4GHz
	Audience Keypad	Dimensions
Control button		16
Power requirement		Battery size "AAA" 1.5volt x 2 Battery lasts for 1 year
RF signal		Maximum 100 meters in an open area
Sleeping mode		Enter Power sleeping mode after 60 minutes
RF frequency		2.4GHz

System Requirements

Recommended Operating System	Microsoft Windows 7 or above
Application	Microsoft Office 2003 /2007/ 2010 (32 bit)
Computer	A minimum of 1024 MB RAM At least 200 MB of hard drive space for software Intel Pentium IV 2.4GHz or higher processor Screen resolution of 1024 x 768 or higher
Others	Projection system, i.e. projector, liquid crystal display (LCD)